

9. Other changing conditions.

Comments:

Incorporate your findings into the plan.

When examining the plan:

Check the box when addressed ✓

1. Revisit the risk assessment.

Comments:

2. Update your goals and strategies.

Comments:

3. Recalculate benefit-cost analyses of projects to prioritize action items.

Comments:

Use the following criteria to evaluate the plan:

Criteria

YES NO Solution

Are the goals still applicable?

--	--	--

Have any changes in the state or community made the goals obsolete or irrelevant?

--	--	--

Do existing actions need to be reprioritized for implementation?

--	--	--

Do the plan's priorities correspond with state priorities?

--	--	--

Can actions be implemented with available resources?

--	--	--

Comments:

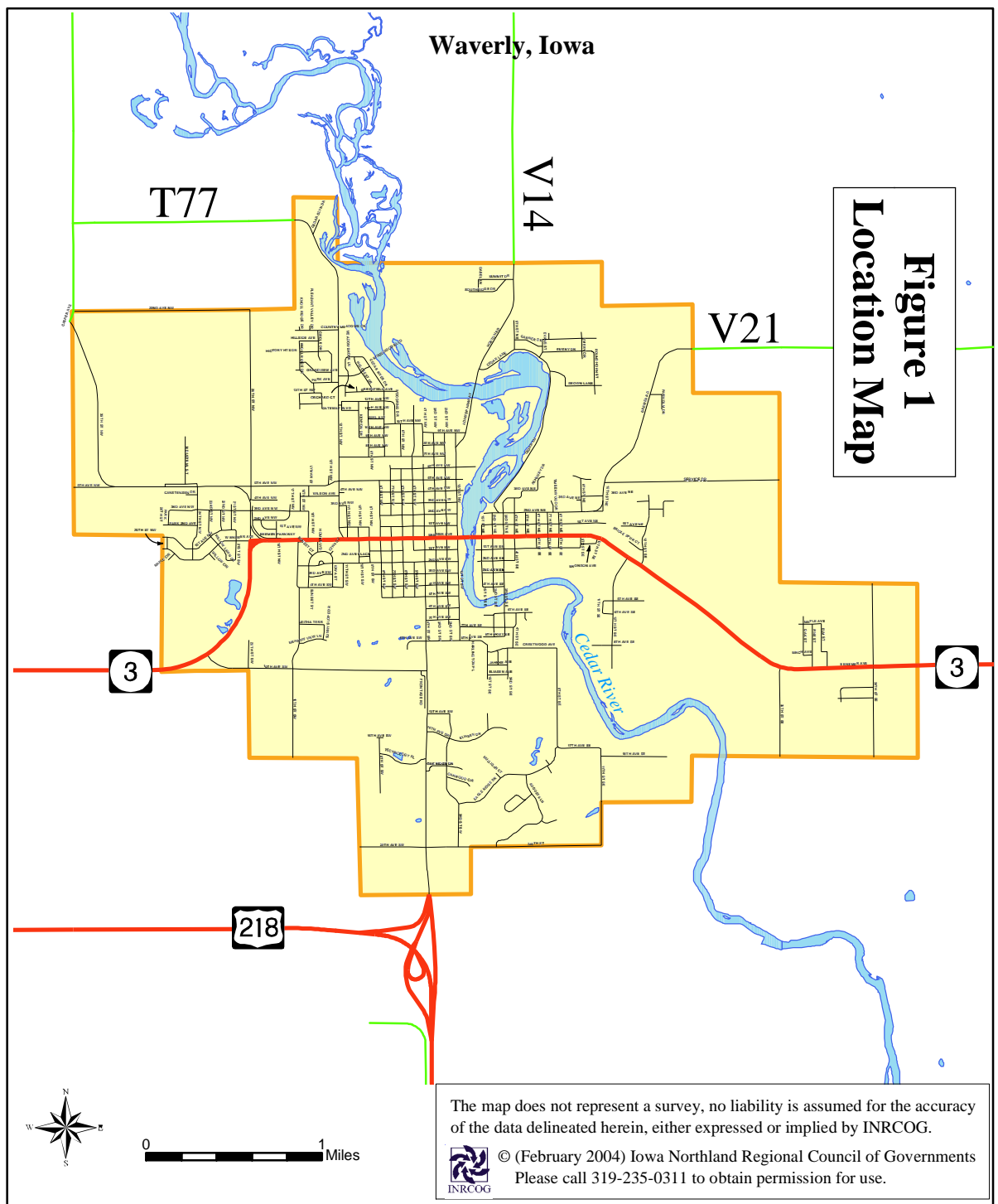
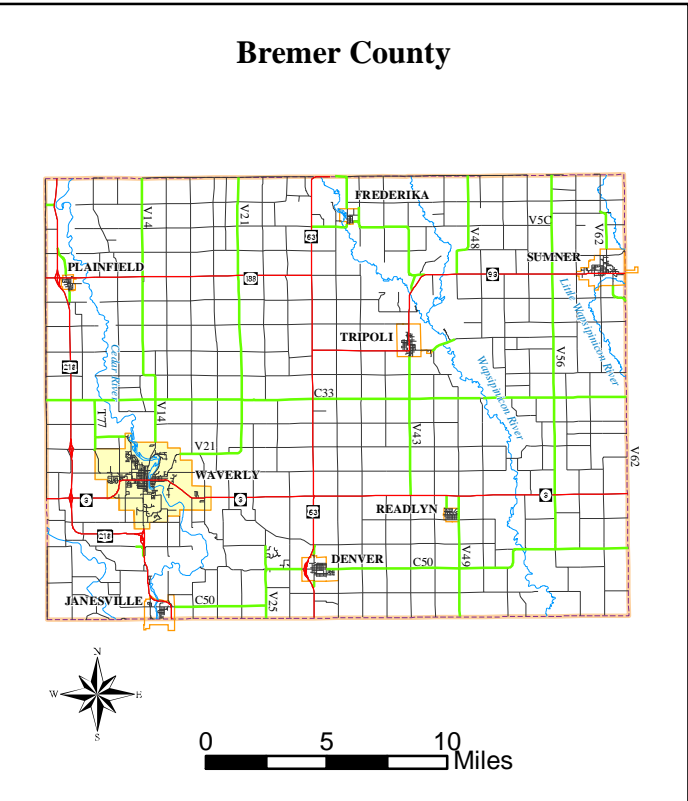
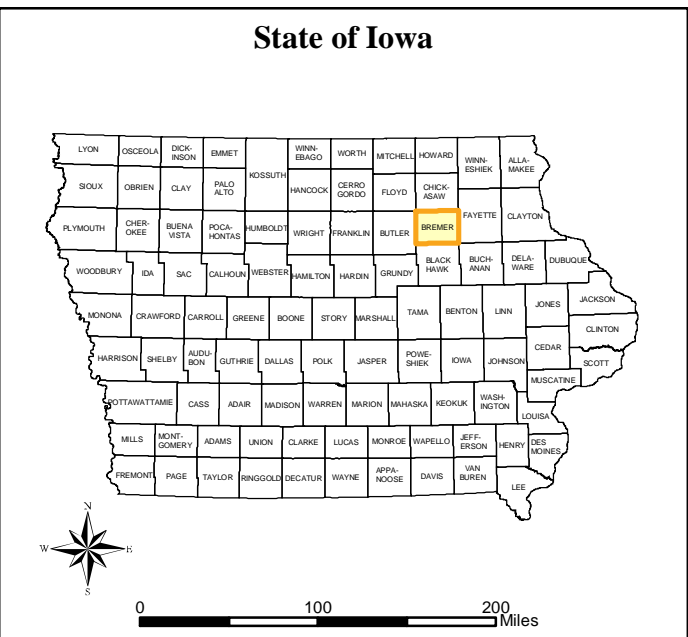


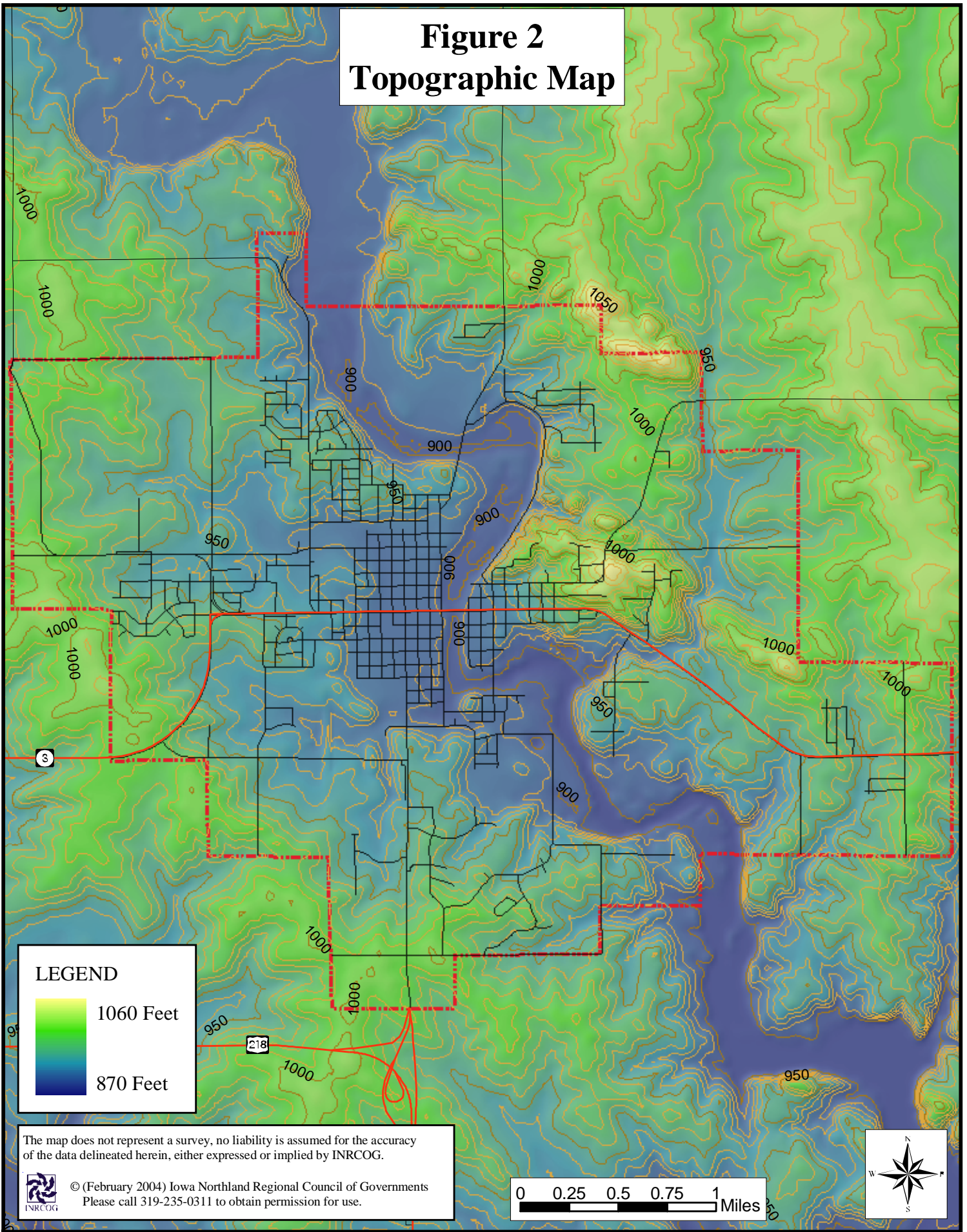
Figure 1
Location Map

The map does not represent a survey, no liability is assumed for the accuracy of the data delineated herein, either expressed or implied by INRCOG.

© (February 2004) Iowa Northland Regional Council of Governments
Please call 319-235-0311 to obtain permission for use.




Figure 2 Topographic Map



LEGEND

	1060 Feet
	870 Feet

The map does not represent a survey, no liability is assumed for the accuracy of the data delineated herein, either expressed or implied by INRCOG.

 © (February 2004) Iowa Northland Regional Council of Governments
Please call 319-235-0311 to obtain permission for use.

