

**CITY OF WAVERLY'S
SUPPLEMENTAL SPECIFICATIONS
TO
THE 2025 EDITION OF
THE IOWA STATEWIDE URBAN DESIGN AND SPECIFICATIONS
STANDARD SPECIFICATIONS FOR PUBLIC IMPROVEMENTS MANUAL**

These Supplemental Specifications amend or supplement the Statewide Urban Design and Specifications Standard Specifications for Public Improvements Manual. All provisions of which are not so amended or supplemented remain in full force and effect.

Please note that these Supplemental Specifications do not contain all references necessary for the construction of infrastructure within the City of Waverly. Contractors shall also refer to City Ordinances, manual, processes and permitting requirements.

CITY OF WAVERLY SUPPLEMENTAL SPECIFICATIONS TO IOWA STATEWIDE
URBAN STANDARD SPECIFICATIONS FOR PUBLIC IMPROVEMENTS MANUAL

TABLE OF CONTENTS

SECTION	PAGE
DIVISION 1 – GENERAL PROVISIONS AND COVENANTS.....	3-5
DIVISION 2 – EARTHWORK.....	6
DIVISION 3 – TRENCH AND TRENCHLESS CONSTRUCTION.....	N/A
DIVISION 4 – SEWERS AND DRAINS.....	7-9
DIVISION 5 – WATER MAINS AND APPURTENANCES.....	10
DIVISION 6 – STRUCTURES FOR SANITARY AND STORM SEWER.....	11
DIVISION 7 – STREETS AND RELATED WORK.....	12
DIVISION 8 – TRAFFIC CONTROL.....	N/A
DIVISION 9 – SITE WORK & LANDSCAPING.....	13
DIVISION 10 – DEMOLITION.....	14
DIVISION 11 – MISCELLANEOUS.....	N/A

DIVISION 1 – GENERAL PROVISIONS AND COVENANTS

SECTION 1010 – DEFINITIONS

1010, 1.03 – DEFINITIONS AND TERMS:

Add the following:

CITY. The City of Waverly, Iowa.

SECTION 1040 – SCOPE OF WORK

1040, 1.09 CHANGED SITE CONDITIONS

B – Compensation:

Add the following:

3. Under no circumstances will payment for downtime be made by the City as project field issues are being resolved, and the City takes action to resolve issues in a timely manner.

1040, 1.10 DISPUTE CLAIMS FOR EXTRA COMPENSATION

A. Basis of Claim for Extra Compensation:

Add the following:

6. Under no circumstances will monetary compensation be made for time necessary by the jurisdiction to resolve disputed claims issues.

SECTION 1050 – CONTROL OF WORK

1050, 1.03 COOPERATION BY THE CONTRACTOR

Add the following:

E. The Contractor shall coordinate the operation of public utility infrastructure with the Jurisdiction. The Contractor shall not operate any public utility infrastructure without the prior approval of the Jurisdiction.

1050, 1.10 LINE AND GRADE STAKES

A. Minimum standards for construction survey provided by the Jurisdiction will meet the requirements of Section 11.010. The Engineer will set the necessary stake promptly upon notification by the Contractor that stakes are needed.

Add the following:

1. On private construction contracts, the owner, in accordance with the private construction contract, shall hire a licensed surveyor for all survey work.

SECTION 1070 – LEGAL RELATIONS AND RESPONSIBILITY TO THE PUBLIC

1070, 1.03 PERMITS AND LICENSES

Remove the following:

The Contractor shall procure all necessary permits for the construction of the work and for the temporary excavations, obstructions, enclosures, and street openings arising from the construction and completion of the work described in the contract documents. ~~The cost for all required Jurisdictional permits and licenses will be waived by the Jurisdiction.~~ The Contractor shall be responsible for all violations of the law or any cause in connection with the construction of the work or caused by the obstruction of roads, streets, highways, or sidewalks, and shall give all requisite notice to the Jurisdiction or other public authorities in connection therewith.

1070, 2.06 TRAFFIC CONTROL

B. Closing Streets to Traffic:

Change the following:

2. The Contractor shall notify the ~~Engineer~~ Jurisdiction ~~48~~ 72 hours in advance (excluding weekends) or closing any roads, streets, or public thoroughfares. No road or street shall be closed without prior approval from the ~~Engineer~~ Jurisdiction.

1070, 2.10 DUST CONTROL

Add the following:

The Contractor shall be responsible to remove any project-related construction materials deposited on a public street as well as related dust control measures. The Contractor shall employ all means necessary to prevent tracking soil, or loss of material, onto public streets, including but not limited to, rocking private access roads and removing excess material from equipment before leaving the construction site.

CITY OF WAVERLY SUPPLEMENTAL SPECIFICATIONS TO IOWA STATEWIDE
URBAN STANDARD SPECIFICATIONS FOR PUBLIC IMPROVEMENTS MANUAL

The Contractor shall promptly remove any material deposited on a public street utilizing mechanical scraping and street sweeping, or other means as required by the Jurisdiction.

DIVISION 2 – EARTHWORK

SECTION 2010 – EARTHWORK, SUBGRADE, AND SUBBASE

2010, 1.08 MEASUREMENT AND PAYMENT

M. Compaction Testing:

Remove the following:

~~1. The Contractor will not be responsible for compaction testing or payment unless otherwise specified in the contract documents.~~

Replace with:

1. The Contractor shall be responsible for compaction testing and payment for testing unless otherwise specified in contract documents.

Add the following:

4. The Contractor shall provide City with all testing results and reports.

2010, 3.04 EMBANKMENT CONSTRUCTION

C. Depositing Embankment Material:

Add the following:

1. Except for rock fills and granular blankets, deposit embankment material in horizontal layers no greater than 8 inches in loose thickness. Do not incorporate vegetative materials in embankments. If some otherwise suitable soil contains small amounts of vegetative materials, such soils may be deposited outside of the shoulder line, within the outer 3 feet of the embankment. No embankment shall be built on frozen earth.

2010, 3.09 FIELD QUALITY CONTROL

C. Testing:

Add the following:

5. Provide City with all testing results and reports.

DIVISION 4 – SEWERS AND DRAINS

SECTION 4010 – SANITARY SEWERS

4010, 3.06 SANITARY SEWER SERVICE STUBS

C5.

Change the following:

For undeveloped properties, ~~place watertight stopper, cap, or plug in end of sanitary service connect~~ Mark to the end of the service line ~~as required by the Jurisdiction~~ with a 90 degree fitting and pipe brought above surface with a glued cap to mark location or as specified in the contract documents.

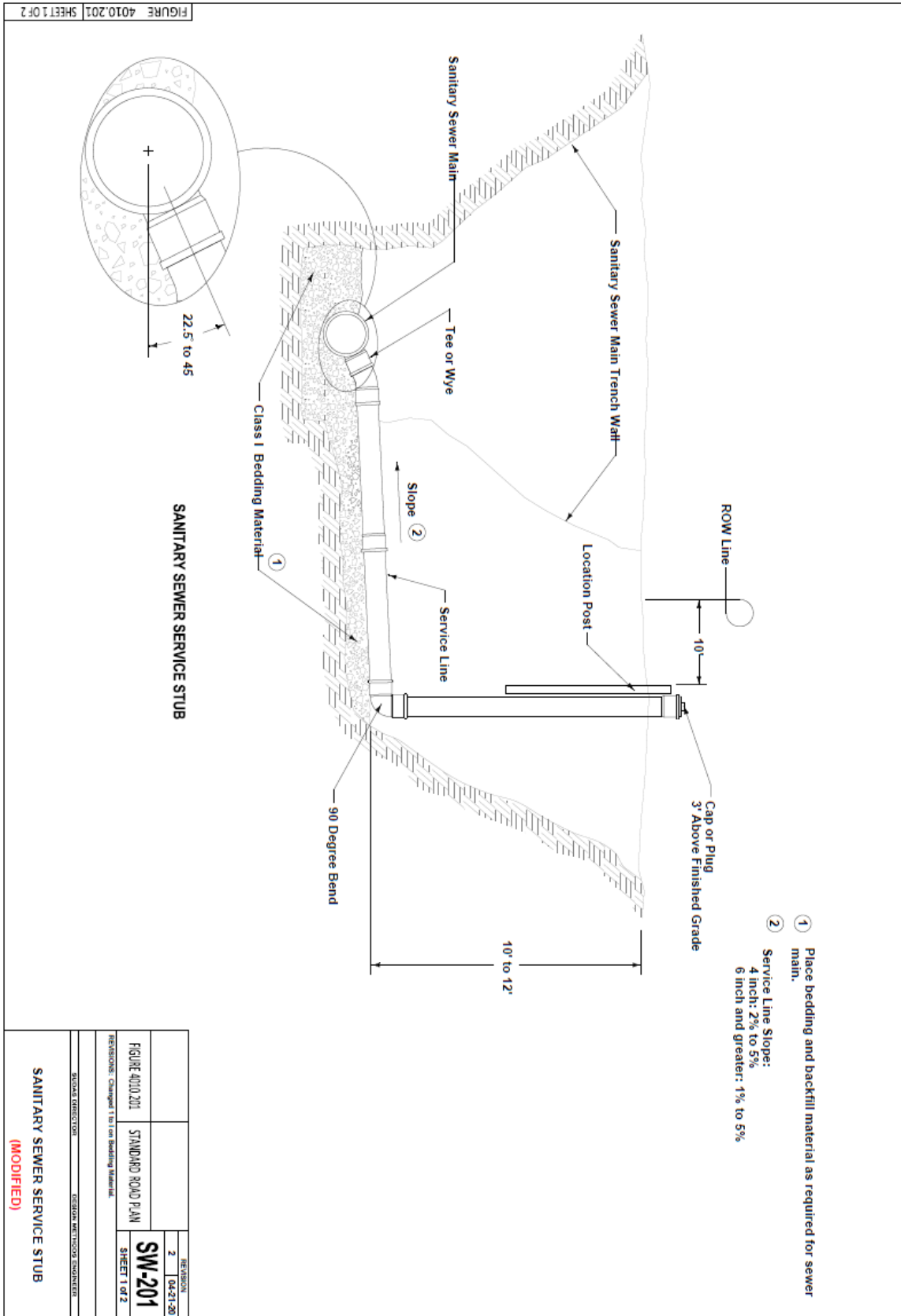
4010, 3.13 CLEANING, INSPECTION, AND TESTING

Figure 4010.

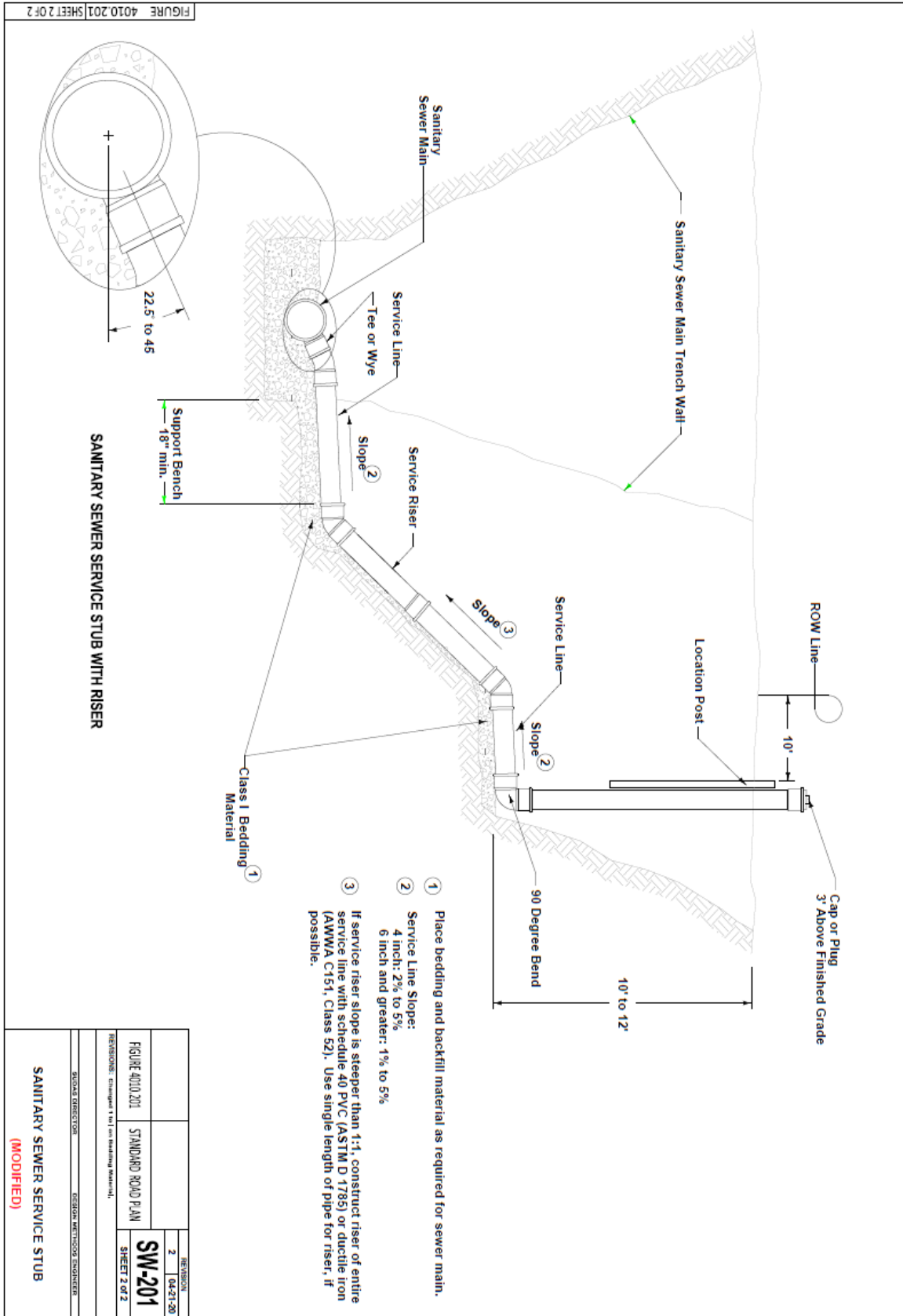
Add the following: (Diagrams attached)

3. Continue service line 3 feet above ground and glue cap.

CITY OF WAVERLY SUPPLEMENTAL SPECIFICATIONS TO IOWA STATEWIDE
URBAN STANDARD SPECIFICATIONS FOR PUBLIC IMPROVEMENTS MANUAL



CITY OF WAVERLY SUPPLEMENTAL SPECIFICATIONS TO IOWA STATEWIDE
URBAN STANDARD SPECIFICATIONS FOR PUBLIC IMPROVEMENTS MANUAL



DIVISION 5 – WATER MAINS AND APPURTENANCES

SECTION 5010 – PIPES AND FITTINGS

5010, 2.07

B. Materials

Remove the following:

- ~~3. PVC Pipe: ASTM D 1785, Schedule 80 or ASTM D 2241, SDR 21. Provide solvent weld joints for all pipes.~~
- ~~4. Brass Pipe: Red, seamless, according to ASTM B 43.~~

5030, 2.07

C. Corporations, Stops, and Stop Boxes

Remove the following:

~~Contact the Jurisdiction for requirements.~~

Add the following:

1. Corporation Stop – Mueller H150082100-N, AY 74701B-22, or similar approved by the Jurisdiction.
2. Curb Stop – Mueller P-25209N, AY 76100-22, or similar approved by the Jurisdiction.
3. Curb Stop Boxes – Small arch base (AY 5601) with two-hole erie cap, stainless steel rod (AY 5660SS) and pin.

DIVISION 6 – STRUCTURES FOR SANITARY AND STORM SEWERS

SECTION 6010 – Structures for Sanitary and Storm Sewers

6010, 2.10 CASTINGS (Ring, Cover, Grate, and Extensions)

E.2. Intakes

Remove the following:

~~b. Castings may include environmental symbols and/or messages such as “DUMP NO WASTE, DRAINS TO RIVER.”~~

Replace with the following:

b. All castings shall be stamped to produce raised lettering matching: “DUMP NO WASTE – DRAINS TO RIVER” or any similar message ensuring N.P.D.E.S. compliance.

6010, 2.13 STEPS

Remove section – steps not allowed in manholes.

6010, 3.01

I. Adjustment Ring(s):

Add the following:

5. Ring stack heights must be achieved with two (2) or less adjustment rings when being used for a minor adjustment of a manhole.

J. Casting:

Add the following:

2. Where a manhole or intake is to be in a paved area, adjust the casting to match the slope of the finished area. Castings may not be shimmed with organic materials (such as wood) or corrosive materials.

DIVISION 7 – STREETS AND RELATED WORK

SECTION 7030 – SIDEWALKS, SHARED USE PATHS, AND DRIVEWAYS

7030, 2.01 PORTLAND CEMENT CONCRETE

Remove the following:

A. Use Class ~~A~~ or C concrete for sidewalks, ~~and~~ driveways and Class ~~C~~ for shared use paths in the City right-of-way with materials complying with Section 7010. Use coarse aggregate of Class 2 durability or better.

7030, 3.10 CLEANING

Add the following:

D. Prior to opening the sidewalks and pedestrian crossings, the Contractor shall clean the detectable warning panels of all superfluous concrete and remove the plastic covering after the concrete is cured such that the panel surface is clean and the truncated surface is fully functional.

SECTION 7060 – BITUMINOUS SEAL COAT

7060, 3.07 CLEAN UP

Add the following:

Ensure that covered/protected manhole and valve tops are uncovered, cleaned and able to open.

DIVISION 9 – SITE WORK AND LANDSCAPING

SECTION 9040 – EROSION AND SEDIMENT CONTROL

9040, 1.07 SPECIAL REQUIREMENTS

A. Permit:

Remove the following:

3. ~~When applicable, comply with the local jurisdiction's permitting requirements.~~

Replace with the following:

3. An erosion control plan must be submitted to the jurisdiction and approved prior to commencing work.

DIVISION 10 – DEMOLITION

SECTION 1010 – DEMOLITION OF BUILDING STRUCTURES

10,010, 3.02 UTILITY DISCONNECTIONS

Remove/Add the following:

A. Sanitary Sewer: Disconnect and plug all sanitary sewer service lines according to Section 4010, 3.08 and the Jurisdiction's ~~Plumbing~~ City Code. Notify engineer for inspection of the disconnection prior to placing backfill material.

B. Water Service: Disconnect all water services by a licensed plumber according to Jurisdiction's ~~Plumbing~~ City Code requirements. Notify engineer for inspection prior to placing backfill material.

10,010, 3.02 UTILITY DISCONNECTIONS

F. Surface Restoration:

Add the following:

3. Sidewalk Street Approach & Curb Cuts: Sidewalks shall be replaced to comply with the Americans with Disabilities Act requirements for all walkable paths. All driveway curb cuts shall be removed and replaced to match adjacent full height curbs.